

# DAÜS<sup>™</sup> Baby<sup>™</sup>

## PRODUCT MANUAL

DAUS<sup>™</sup> User-Activated Supplemental Nursing System  
with Flow Regulator

### SYSTEM INCLUDES



#### Parts:

- 1 Any Angle Weight
- 2 Inlet (Milk) Tube
- 3 On/Off Flow Regulator
- 4 Milk Pouch
- 5 Outlet (Feeding) Tube

#### Accessories:

- A Dust/Leak-Proof Storage Cap
- B Cleaning Brush
- C Body Tape

Materials: Food Grade BPA-Free Silicone and Plastic.

### ASSEMBLY

#### Assembly:

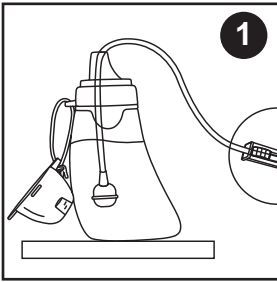
- Step 1 - Thread inlet tube (2) through the opening of the Spout.
- Step 2 - Attach weight (1) to inlet tube's end.
- Step 3 - Thread the outlet end (4) through the regulator (3).
- Step 4 - Move up the regulator to be on the inlet tube.

#### Disassembly:

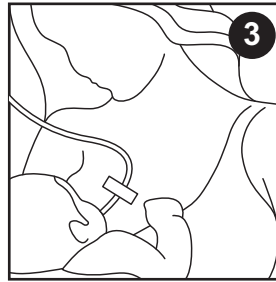
- 1. Open milk pouch and remove the spout.
- 2. Remove the weight and take out the tube.
- 3. Slide the regulator toward the outlet end
- 4. and off the feeding tube.



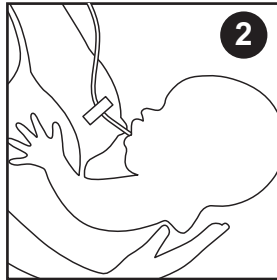
## USE



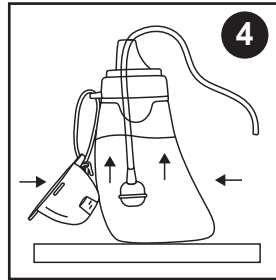
**1** Place the formula/milk filled pouch above the feeding area.



**3** Introduce your baby to breast and gently insert Outlet end into baby's mouth.



**2** Align the end of the Outlet tube with nipple and attach with tape to breast 1-2 cm above the nipple.



**4** Squeeze the milk pouch one or several times to begin flow. Use Flow Regulator to stop or restart flow.

## CARE:

- Dishwasher (top rack only), bottle sterilizer, and boiling safe. Exposure to dishwashing detergent may make the silicone parts appear cloudy. This is normal and does not affect the safety or function of the product.
- Handwashing safe: soak in warm soapy water, rinse thoroughly with running clean water until clear of all soapy residue, and air dry.
- Use the provided extended cleaning brush as needed. Enter from the inlet (thicker) end.



**Dishwasher  
Safe**



**Handwash  
Safe**

**Caution:**

- ⚠ Take care to wash off any soapy or detergent residue after cleaning.
- ⚠ This product is not a toy – only use for its intended purpose and store away from children when not in use.
- ⚠ Adult supervision is required when in use.
- ⚠ Discontinue use immediately and discard at any sign of damage.

**Manufactured and distributed by:**

Pacific Global Trade, Inc.  
Los Angeles, CA 91604  
sales@pacificglobaltradeinc.com

**Made in China**

DAUS™ and DAUS Baby™ are the property of Dental Alloys USA, Los Angeles, California, USA. Used with permission.